

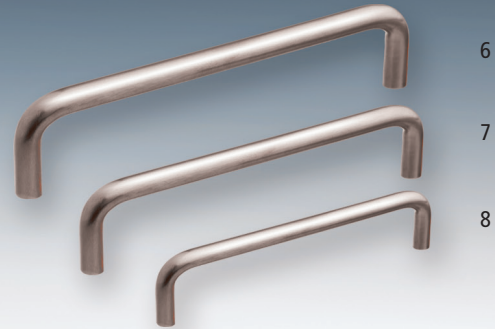
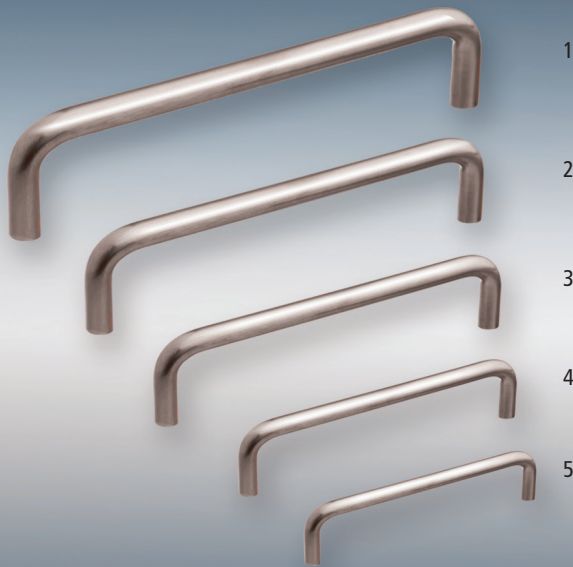


# CuSalus® Products

Made with CuVerro® Antimicrobial Copper  
A new weapon against bacteria\* that cause hospital infections



**CuSalus®**



## CuSalus® with CuVerro® EPA<sup>1</sup> registered antimicrobial copper continuously cleans frequently touched surfaces, killing bacteria\* harmful to human health.

- **CuSalus®** provides effective protection against 6 common types of bacteria\* that can cause hospital infections:
  - Methicillin-resistant Staphylococcus aureus (MRSA)
  - Staphylococcus aureus
  - E. coli O157:H7
  - Enterobacter aerogenes
  - Pseudomonas aeruginosa
  - Vancomycin-resistant Enterococcus faecalis (VRE)
- Proven efficacy as an antimicrobial – the most effective antimicrobial solid surface.
- Proven to continuously kill the bacteria\* that cause infections.
- Remains effective even after repeated wet and dry abrasion and recontamination.
- Studies show:
  - Tests show 96% less bacteria\* than on comparable stainless steel surfaces;
  - Kills 99.9% of bacteria\* within 2 hours, when cleaned regularly.



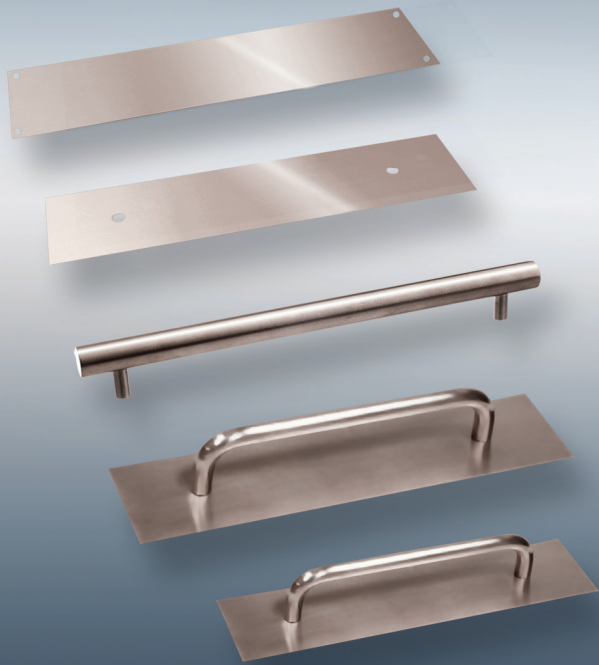
REF. NO.	MATERIAL	DESCRIPTION	DIMENSION / C.C.
1	7556195AMC	CUPRONICKEL CABINET PULL	8" 8 MM D (8/32)
2	75235195AMC	CUPRONICKEL CABINET PULL	5" 8 MM D (8/32)
3	7534195AMC	CUPRONICKEL CABINET PULL	4" 8 MM D (8/32)
4	75235195AMC	CUPRONICKEL CABINET PULL	3.5" 8 MM D (8/32)
5	7513195AMC	CUPRONICKEL CABINET PULL	3" 8 MM D (8/32)
6	375160195AMC	CUPRONICKEL CABINET PULL	160 MM, 10 MM D (8/32)
7	375128195AMC	CUPRONICKEL CABINET PULL	128 MM, 10 MM D (8/32)
8	37596195AMC	CUPRONICKEL CABINET PULL	96 MM, 10 MM D (8/32)

CUPRONICKEL: CuVerro® V EPA registration 87753 (90% copper - 10% nickel)

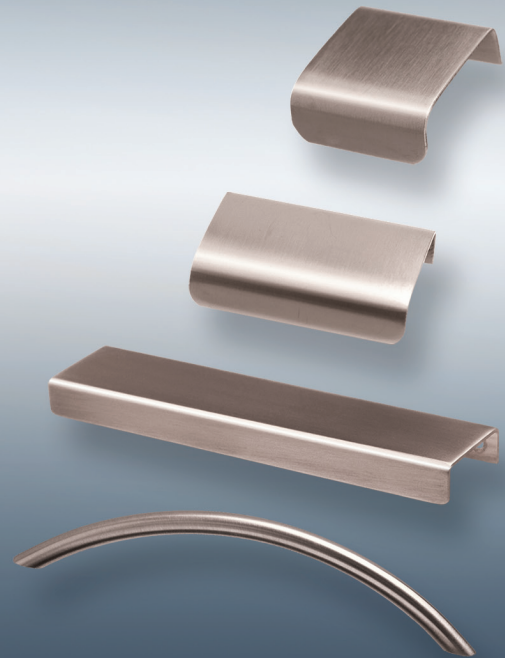


<sup>1</sup> U.S. EPA (87753-5).

\* Laboratory testing shows that, when cleaned regularly, CuVerro® surfaces kill more than 99.9% of the following bacteria\* within 2 hours of exposure: methicillin-resistant Staphylococcus aureus, Staphylococcus aureus, Enterobacter aerogenes, Pseudomonas aeruginosa, E. coli O157:H7 and vancomycin-resistant Enterococcus faecalis (VRE). The use of CuVerro® antimicrobial copper products is a supplement to and not a substitute for standard infection control practices; users must continue to follow all current infection control practices, including those practices related to cleaning and disinfection of environmental surfaces. This surface has been shown to reduce microbial contamination, but it does not necessarily prevent cross contamination. CuVerro® is a registered trademark of GBC Metals, LLC and is used with permission (CB-0003-1403).



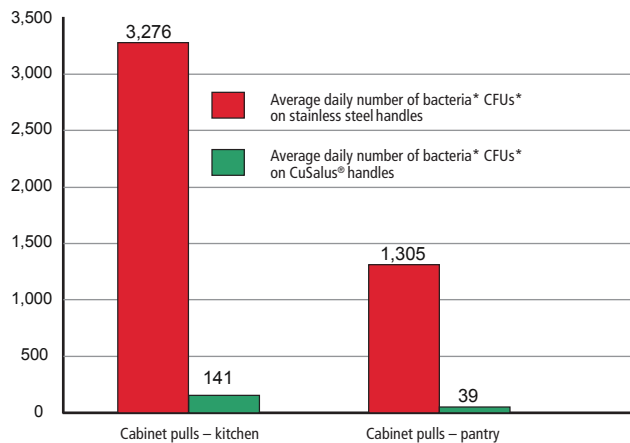
10  
11  
12  
13  
14



15  
16  
17  
18

## Door and Cabinet Hardware

Comparison of bacteria\* count on cabinet handles – Ronald McDonald House



\*CFU: Colony-Forming Unit

REF. NO.	MATERIAL	DESCRIPTION	DIMENSION / C.C.
10	94116195AMC CUPRONICKEL	PUSH PLATE	16" x 4"
11	940816195AMC CUPRONICKEL	PUSH PLATE FOR 8" PULL	8" CC 16" X 4"
12	246110195AMC CUPRONICKEL	APPLIANCE PULL	10" 20 MM D (8/32)
13	22218195AMC CUPRONICKEL	APPLIANCE PULL	8" 20 MM D (8/32)*
14	22228195AMC CUPRONICKEL	APPLIANCE PULL	8" 20 MM D (8/32)*
15	7081195AMC CUPRONICKEL	EDGE PULL	1" (WOOD SCREW)
16	7092195AMC CUPRONICKEL	EDGE PULL	2" (WOOD SCREW)
17	710610195AMC CUPRONICKEL	EDGE PULL	6" (WOOD SCREW)
18	870160195AMC CUPRONICKEL	CABINET PULL	160 MM (8/32)

\*Push plate not included.  
CUPRONICKEL: CuVerro® V EPA registration 87753 (90% copper - 10% nickel)



**CANADA**  
1 800-361-6000

**USA**  
1 800-619-5446

[www.richelieu.com](http://www.richelieu.com)

**ALBERTA**  
Calgary  
Edmonton

**BRITISH COLUMBIA**  
Kelowna  
New Westminster  
Vancouver  
Victoria  
Richmond

**CONNECTICUT**  
Hartford

**FLORIDA**  
Dania Beach  
Hialeah  
Pompano Beach  
Riviera Beach

**GEORGIA**  
Atlanta  
Savannah

**MANITOBA**  
Winnipeg

**NEW FOUNDLAND**  
St. John

**NOVA SCOTIA**  
Halifax

**NEW BRUNSWICK**  
Moncton

**ILLINOIS**  
Chicago

**INDIANA**  
Indianapolis

**KENTUCKY**  
Louisville

**MASSACHUSETTS**  
Boston

**MICHIGAN**  
Detroit

**ONTARIO**  
Barrie  
Kitchener  
Mississauga  
Ottawa  
Sudbury  
Thunder Bay  
Toronto

**NEW JERSEY**  
Avenel  
Lincoln Park

**NEW YORK**  
New York  
Syracuse

**NORTH CAROLINA**  
Charlotte  
Greensboro  
Raleigh

**QUÉBEC**  
Laval  
Montréal  
Québec

**SASKATCHEWAN**  
Regina  
Saskatoon

**OHIO**  
Cincinnati  
Cleveland  
Columbus

**SOUTH CAROLINA**  
Greenville

**TENNESSEE**  
Nashville

**WASHINGTON**  
Seattle